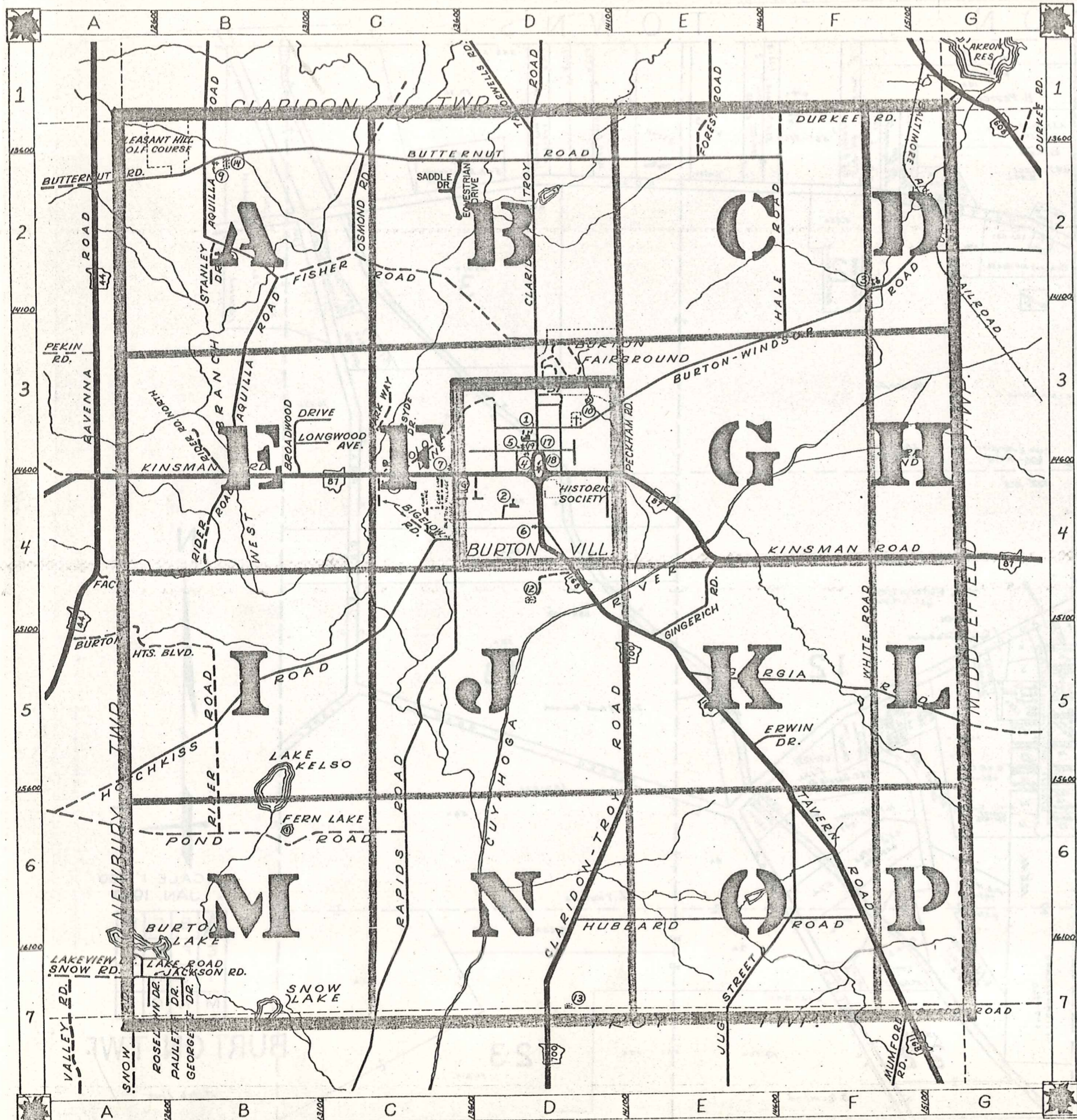


ROAD INDEX



A ALDERSYDE DR. AQUILLA RD.	C-3 HALE RD. HOTCHKISS RD. HUBBARD RD.	F-2 PECKHAM RD. POND RD. D6-F6	E-3 A6-C6
B BIGELOW RD. BROADWOOD DR. BURTON HTS. BLVD. BURTON-WINDSOR RD. BUTTERNUT RD.	C-4 B-3 A-5 D3-G2 A2-F2	I	R RAPIDS RD. RIDER RD. ROSELAWN DR.
C CHIPMUNK LN. CLARIDON-TROY RD. COLONY LN.	G-5 D1-D7 C-3	J JACKSON RD. JUG ST.	S SHEDD RD. SNOW RD. STANLEY DR. STATION RD. SADDLE DR.
D DURKEE RD.	F-1	L LAKE RD. LAKEVIEW DR. LONGWOOD AVE.	A-7 A-7 B-3
E ERWIN DR. EQUESTRIAN DR.	F-5 C-2	M	U
F FISHER RD. FOREST RD.	B2-D3 E-1	N	V
G GEORGETTE DR. GEORGIA RD. GINGERICH RD.	B-7 E5-G5 E-4	O OSMOND RD.	C-2
P PARK WAY PAULETTE DR.	C-3 A-7	T TAYLORWELLS RD. TAVERN RD.	D-1 D4-G7

- | | |
|-----------------------------------|------------------------------|
| ① BURTON HIGH SCHOOL | ⑪ WILLIAMS CEMETERY |
| ② CARLTON ST. ELEM. SCHOOL | ⑫ LOWER CEMETERY |
| ③ MAPLE VIEW MENNONITE CH. & SCH. | ⑬ SLITOR CEMETERY |
| ④ BURTON CONGREGATIONAL CH. | ⑭ PLEASANT HILL CEMETERY |
| ⑤ ASSEMBLY OF GOD CHURCH | ⑮ GAUGA COUNTY HIGHWAY DEPT. |
| ⑥ ONNEN TOIVO (TEMPERANCE SOC.) | ⑯ STATE HIGHWAY DEPT. |
| ⑦ CHRISTIAN SCIENCE CHURCH | ⑰ UNITED STATES POST OFFICE |
| ⑧ MENNONITE CHURCH | ⑱ BURTON SUGAR HOUSE |
| ⑨ MENNONITE CHURCH | ⑲ BURTON VOL. FIRE DEPT. |
| ⑩ WELTON CEMETERY | ○ |

BURTON TOWNSHIP

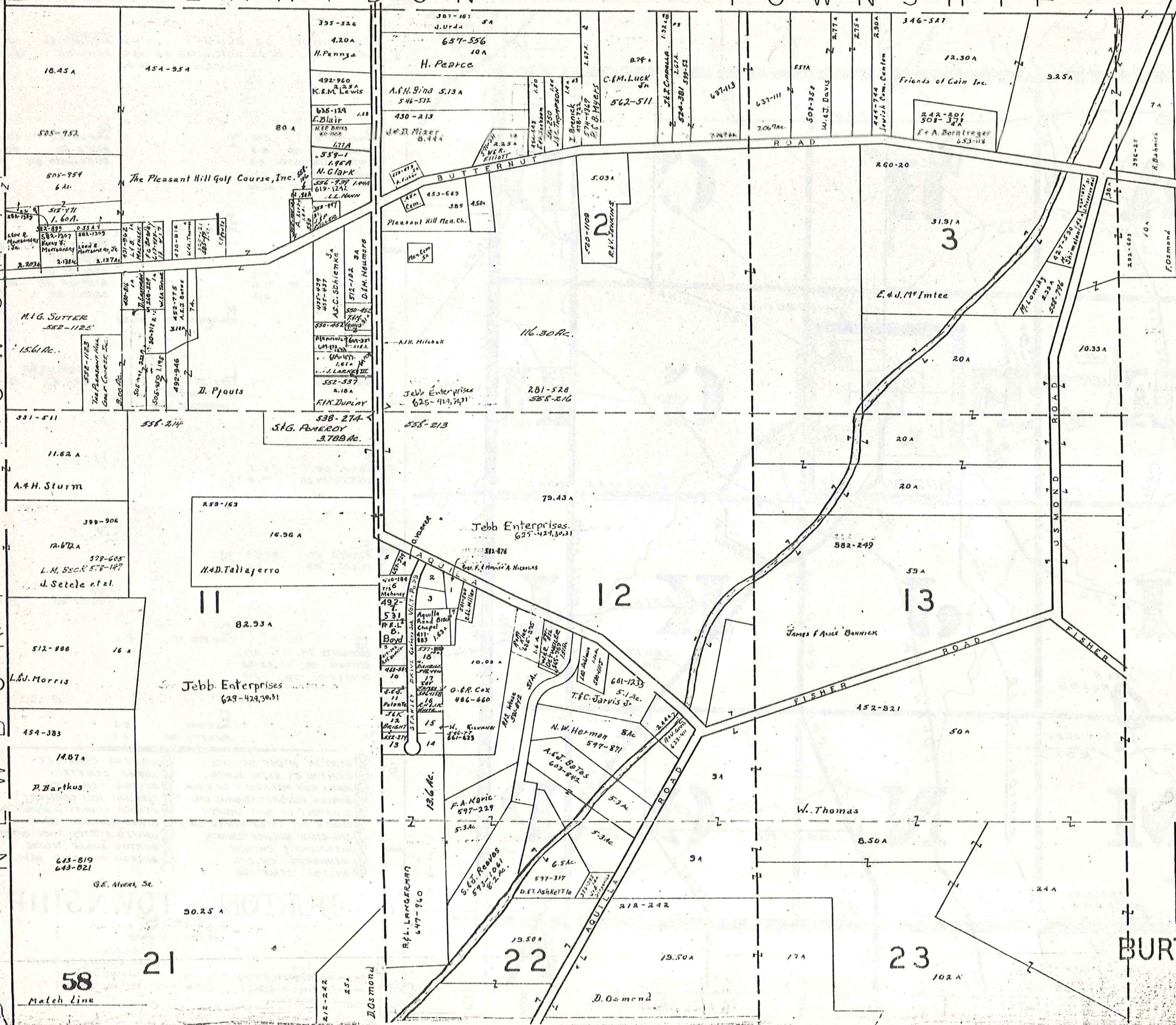
SCALE: 1" = 2000'
O. J. ROBINSON
GAUGA COUNTY ENGINEER

- UNPAVED ROADS
- PAVED ROADS
- ++++ RAILROAD
- TOWNSHIP LINE
- VILLAGE CORP. LINE

CLARIDON

TOWNSHIP

NEWBURY TOWNSHIP



SCALE 1" = 300'
 JAN. 1980

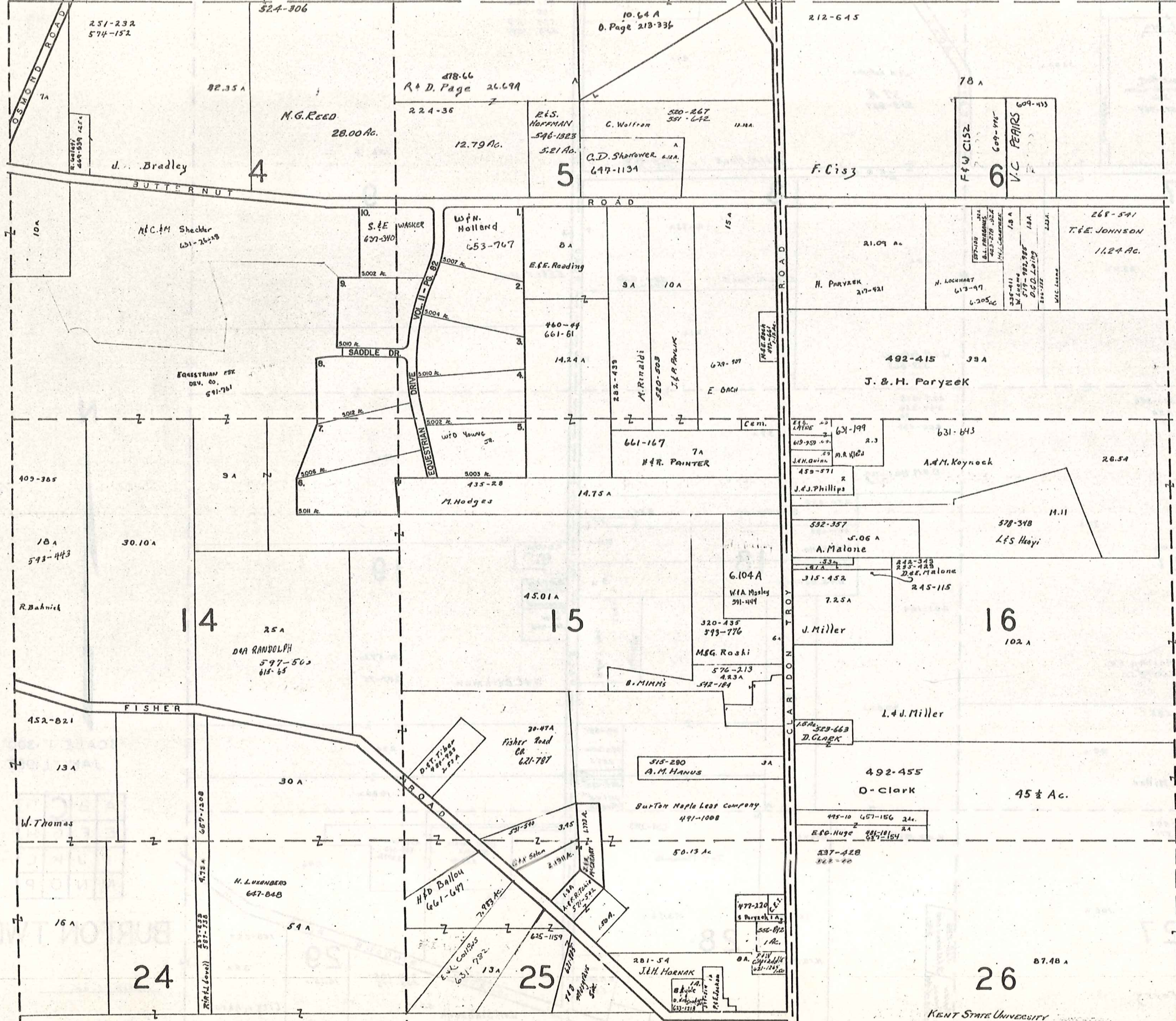
A	B	C	D
E	F	G	H
I	J	K	L
M	N	O	P

BURTON TWP.

Match Line

58
 Match Line

CLARDON TOWNSHIP

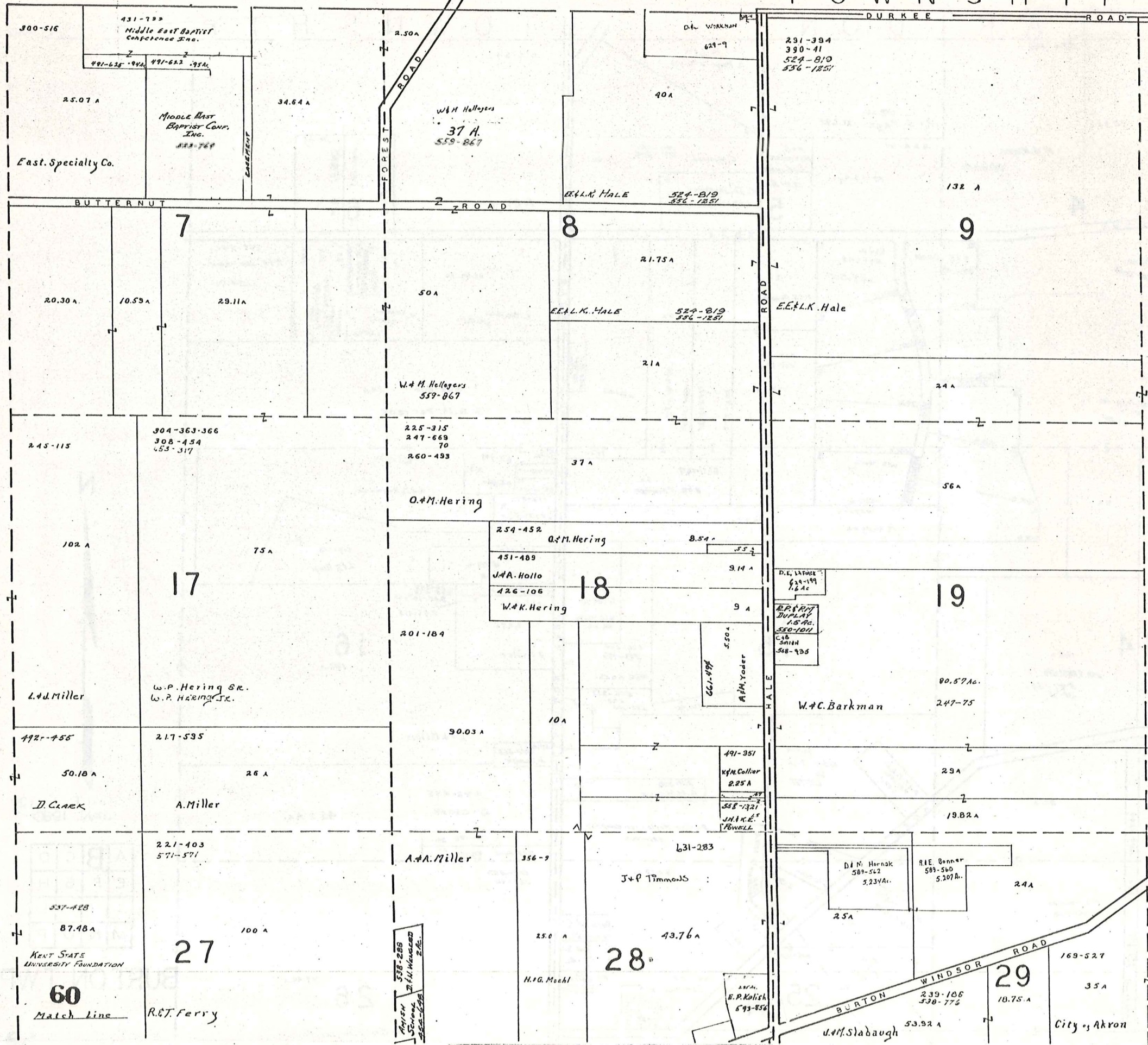


SCALE 1" = 300'
JAN. 1980

A	B	C	D
E	F	G	H
I	J	K	L
M	N	O	P

BURTON TWP

CLARIDON TOWNSHIP



SCALE 1" = 300'
JAN. 1, 1980

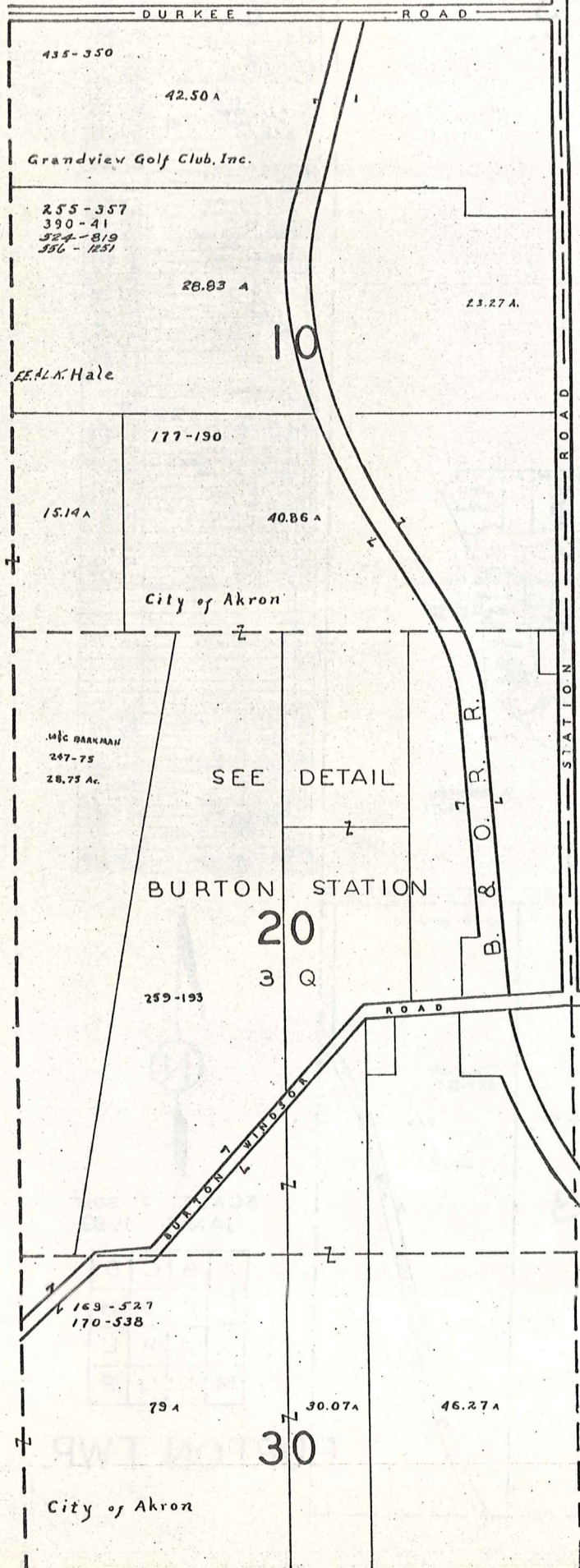
A	B	C	D
E	F	G	H
I	J	K	L
M	N	O	P

BURTON TWP

Match Line

60
Match Line

CLARIDON TOWNSHIP



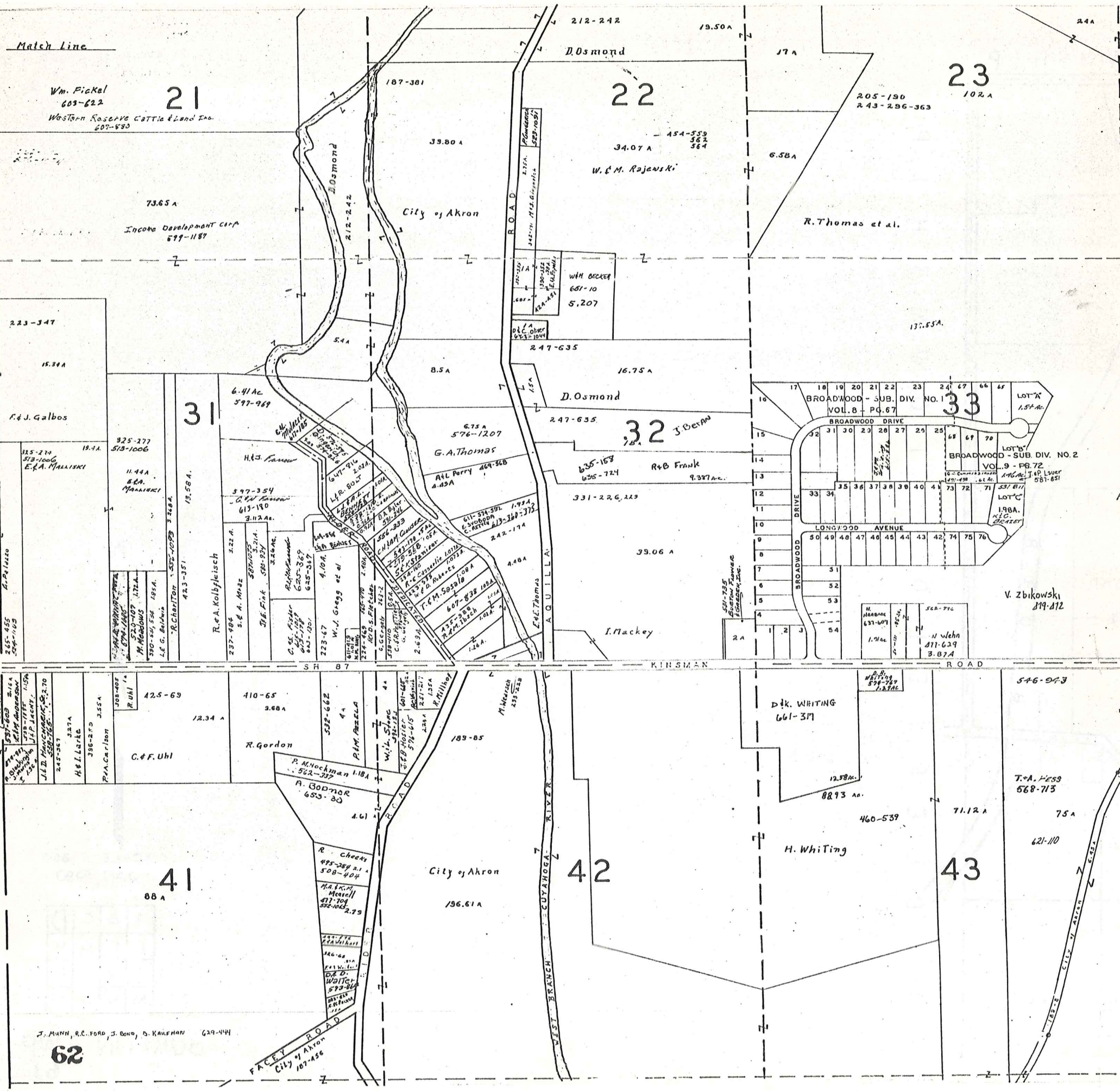
M I D D L E F I E L D T O W N S H I P



SCALE, 1" = 300'
JAN., 1980

A	B	C	D
E	F	G	H
I	J	K	L
M	N	O	P

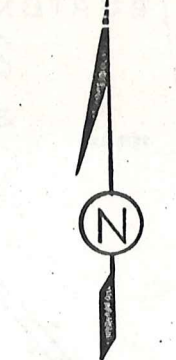
BURTON TWP
61



Match Line

BROADWOOD SUB. NO. 1 & 2

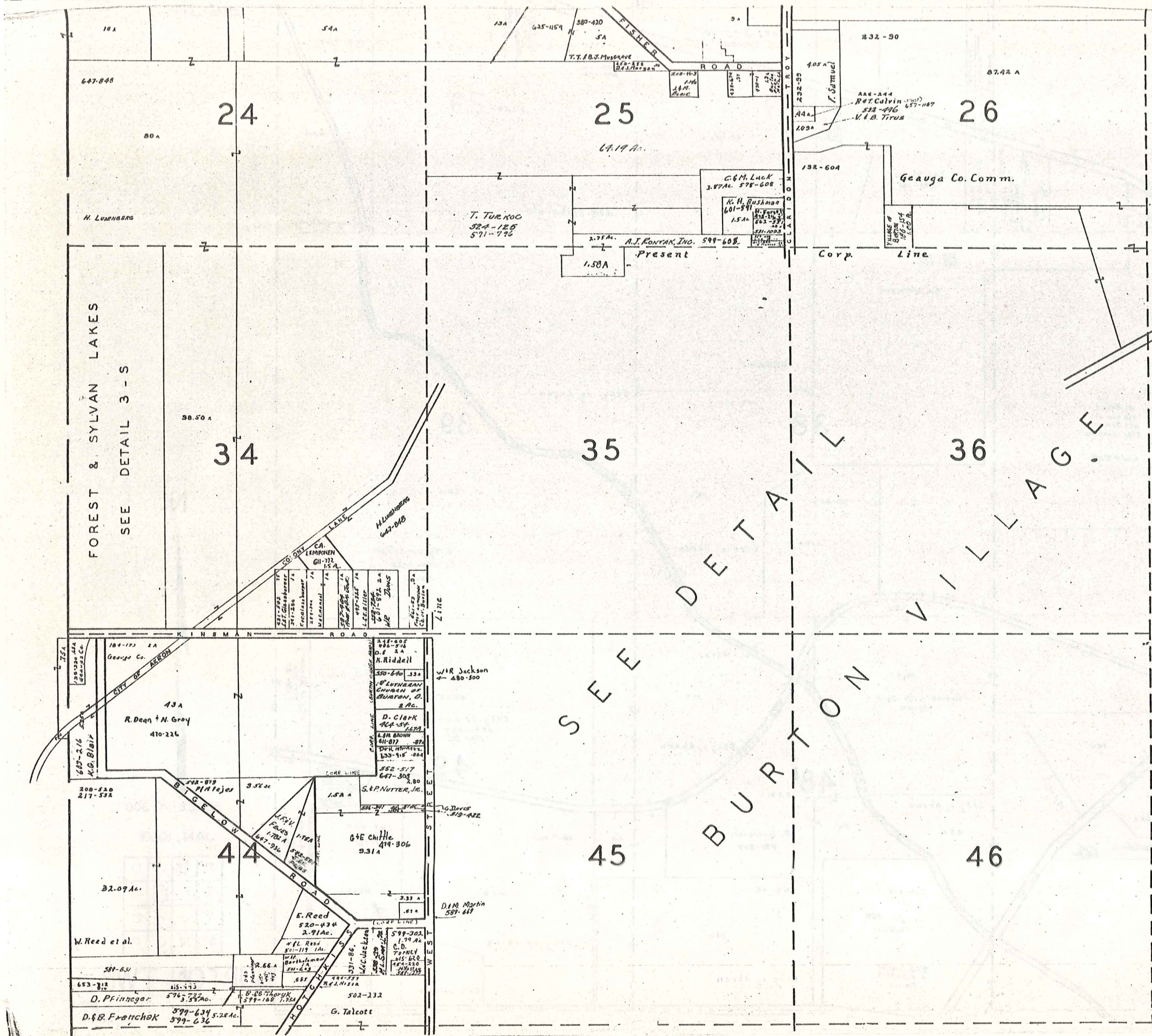
1	Wm. Fickel	603-622
2	W.C.M. Rajewski	34.07 A
3	R. Thomas et al.	6.58 A
4	J. Mackey	39.06 A
5	D.K. Whiting	661-371
6	T.A. Hess	546-973
7	H. Whiting	460-539
8	R. Gordon	410-65
9	C. & F. Uhl	425-63
10	R. A. Kolbyjeisch	13.58 A
11	G. A. Thomas	576-1207
12	R. & B. Frank	9.377 A
13	J. C. Deran	16.75 A
14	Wm. Decker	601-10
15	Wm. Decker	5.207
16	Wm. Decker	601-10
17	Wm. Decker	5.207
18	Wm. Decker	601-10
19	Wm. Decker	5.207
20	Wm. Decker	601-10
21	Wm. Decker	5.207
22	Wm. Decker	601-10
23	Wm. Decker	5.207
24	Wm. Decker	601-10
25	Wm. Decker	5.207
26	Wm. Decker	601-10
27	Wm. Decker	5.207
28	Wm. Decker	601-10
29	Wm. Decker	5.207
30	Wm. Decker	601-10
31	Wm. Decker	5.207
32	Wm. Decker	601-10
33	Wm. Decker	5.207
34	Wm. Decker	601-10
35	Wm. Decker	5.207
36	Wm. Decker	601-10
37	Wm. Decker	5.207
38	Wm. Decker	601-10
39	Wm. Decker	5.207
40	Wm. Decker	601-10
41	Wm. Decker	5.207
42	Wm. Decker	601-10
43	Wm. Decker	5.207
44	Wm. Decker	601-10
45	Wm. Decker	5.207
46	Wm. Decker	601-10
47	Wm. Decker	5.207
48	Wm. Decker	601-10
49	Wm. Decker	5.207
50	Wm. Decker	601-10
51	Wm. Decker	5.207
52	Wm. Decker	601-10
53	Wm. Decker	5.207
54	Wm. Decker	601-10
55	Wm. Decker	5.207
56	Wm. Decker	601-10
57	Wm. Decker	5.207
58	Wm. Decker	601-10
59	Wm. Decker	5.207
60	Wm. Decker	601-10
61	Wm. Decker	5.207
62	Wm. Decker	601-10
63	Wm. Decker	5.207
64	Wm. Decker	601-10
65	Wm. Decker	5.207
66	Wm. Decker	601-10
67	Wm. Decker	5.207
68	Wm. Decker	601-10
69	Wm. Decker	5.207
70	Wm. Decker	601-10
71	Wm. Decker	5.207
72	Wm. Decker	601-10
73	Wm. Decker	5.207
74	Wm. Decker	601-10
75	Wm. Decker	5.207
76	Wm. Decker	601-10
77	Wm. Decker	5.207
78	Wm. Decker	601-10
79	Wm. Decker	5.207
80	Wm. Decker	601-10
81	Wm. Decker	5.207
82	Wm. Decker	601-10
83	Wm. Decker	5.207
84	Wm. Decker	601-10
85	Wm. Decker	5.207
86	Wm. Decker	601-10
87	Wm. Decker	5.207
88	Wm. Decker	601-10
89	Wm. Decker	5.207
90	Wm. Decker	601-10
91	Wm. Decker	5.207
92	Wm. Decker	601-10
93	Wm. Decker	5.207
94	Wm. Decker	601-10
95	Wm. Decker	5.207
96	Wm. Decker	601-10
97	Wm. Decker	5.207
98	Wm. Decker	601-10
99	Wm. Decker	5.207
100	Wm. Decker	601-10



SCALE 1" = 300'
JAN 1, 1980

A	B	C	D
E	F	G	H
I	J	K	L
M	N	O	P

BURTON TWP.



FOREST & SYLVAN LAKES
SEE DETAIL 3-S

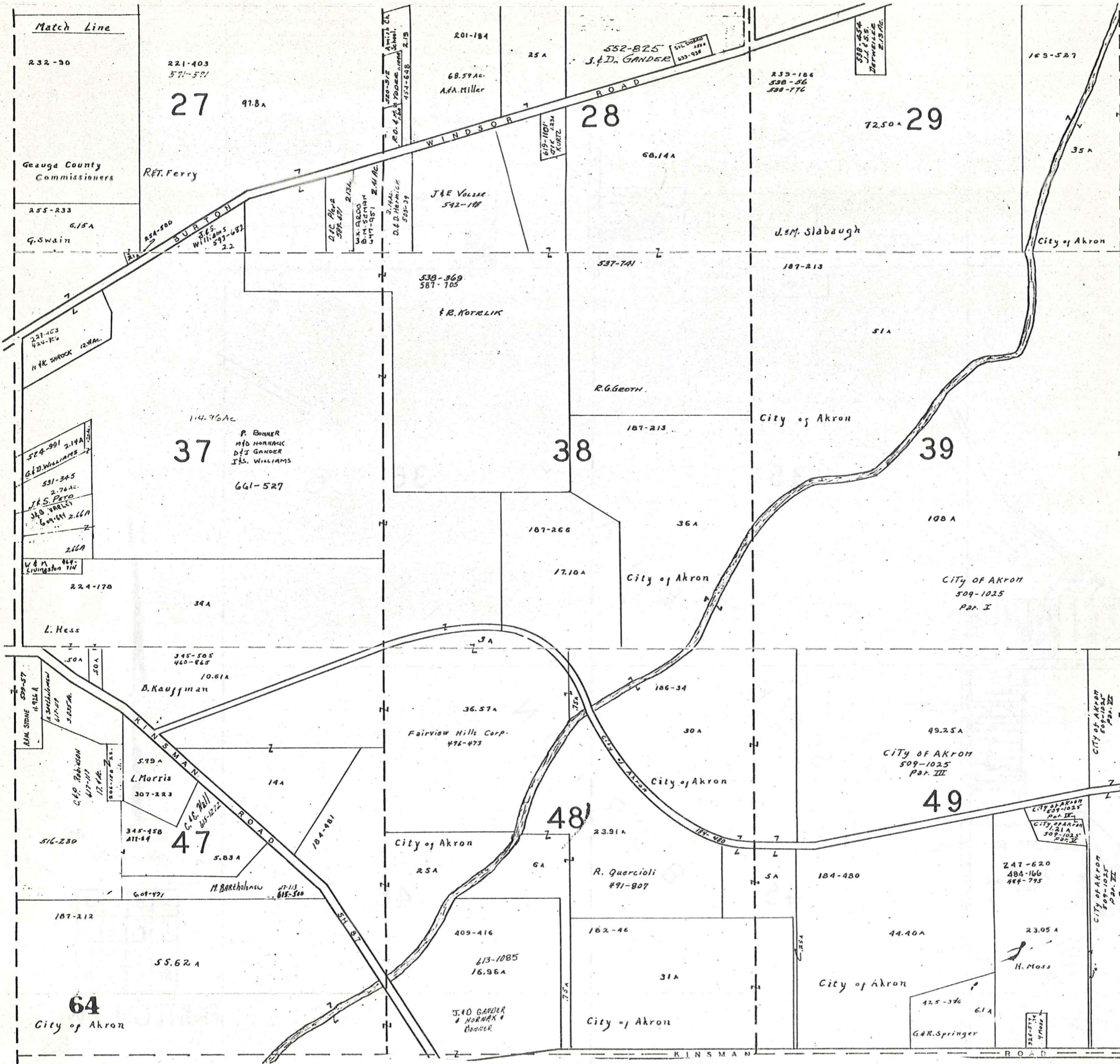
SEE
DETAIL
BURTON
VILLAGE



SCALE 1" = 300'
JAN. 1980

A	B	C	D
E	F	G	H
I	J	K	L
M	N	O	P

BURTON TWP
63



Match Line

N

SCALE 1" = 300'

JAN. 1980

A	B	C	D
E	F	G	H
I	J	K	L
M	N	O	P

BURTON TWP.

Match Line

169-527
170-538

187-377

30

79 A

30.07 A

16.27 A

City of Akron

177-10

City of Akron

City of Akron

CITY OF AKRON
509-1025
Part II

40

157.50 A

CITY OF AKRON
509-1025
80.15 A

Part II

W.L. Stone
593-429

41.81 Ac.

City of Akron
185A 104-480 573-99

CITY OF AKRON
509-1025

50

19.63 A

Part II

232-101

14.80 A

R. Fritinger

T.S. NARAIN
600-370

W.M. LIVINGSTON
531-950

Barland
631-654
2A

H.P. HARVEY
607-50
2.46.

M I D D L E F I E L D T O W N S H I P

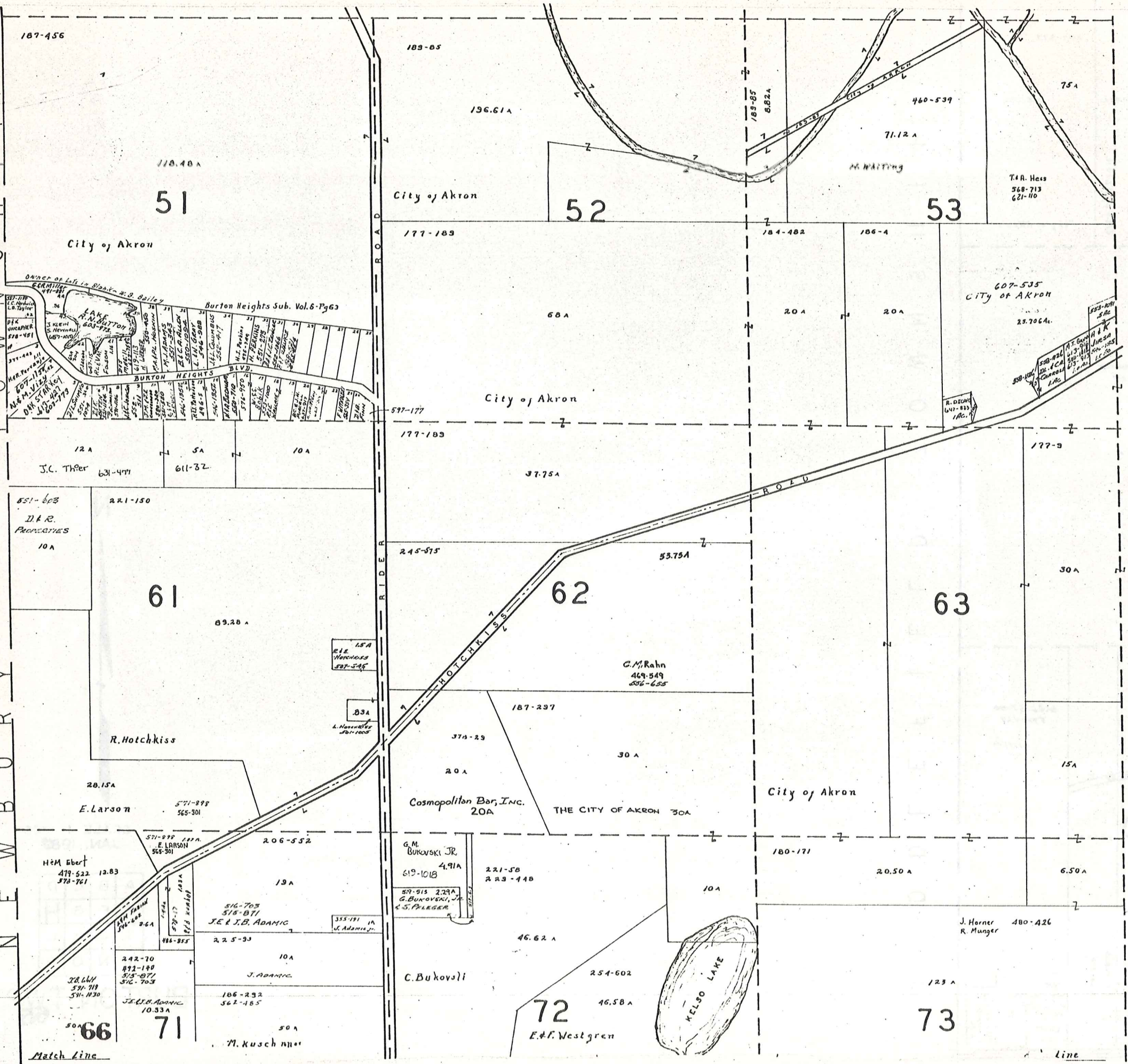


SCALE 1 300
JAN. 1980

A	B	C	D
E	F	G	H
I	J	K	L
M	N	O	P

BURTON TWP.
65

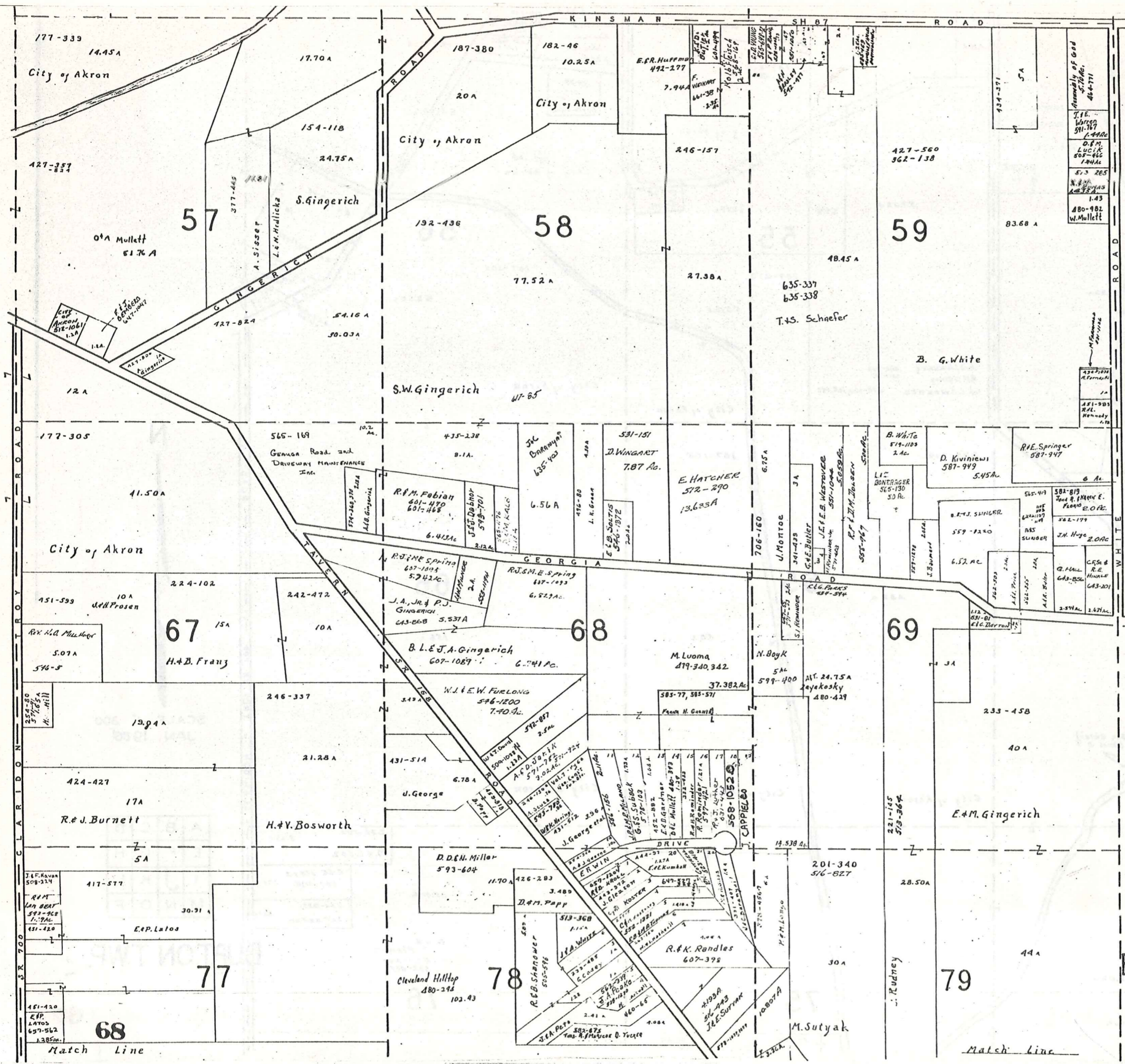
N E W B U R Y T O W N S H I P



SCALE 1" = 300'
JAN. 1980

A	B	C	D
E	F	G	H
I	J	K	L
M	N	O	P

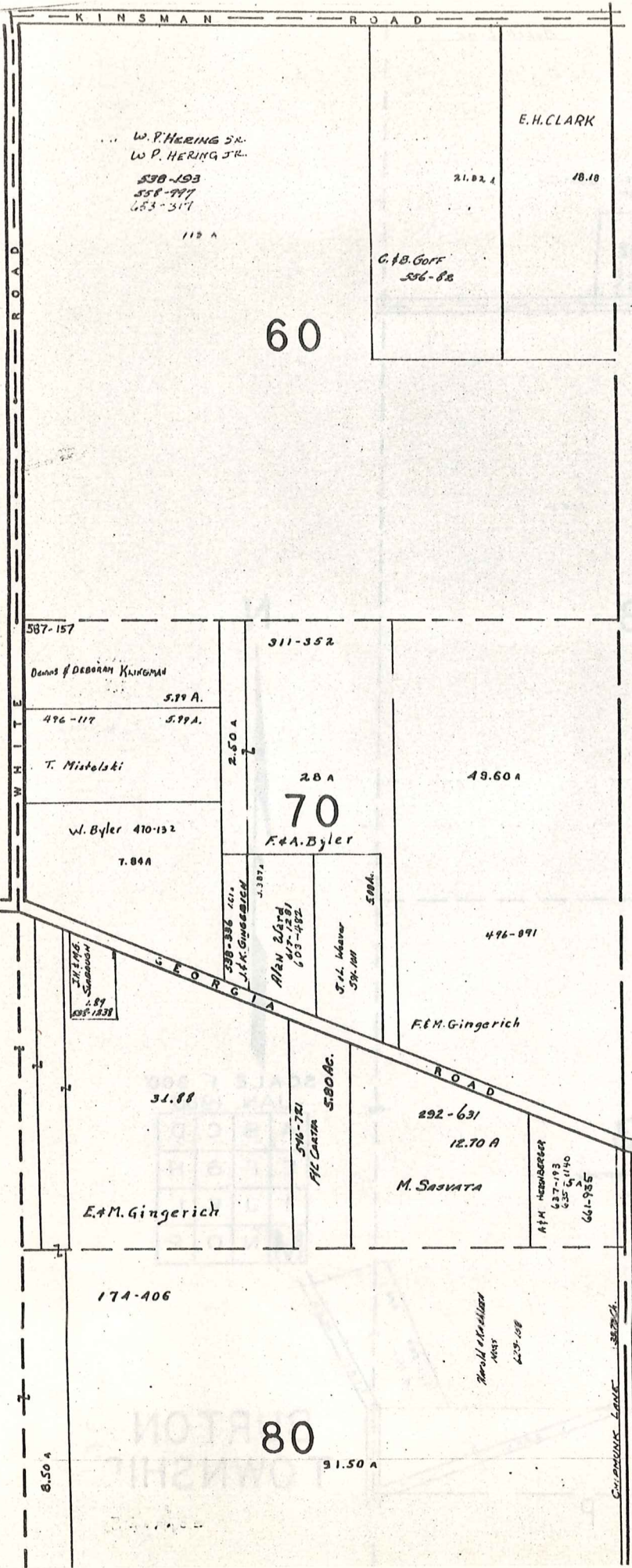
BURTON TOWNSHIP



SCALE 1" = 300'
 JAN. 1980

A	B	C	D
E	F	G	H
I	J	K	L
M	N	O	P

BURTON TWP.



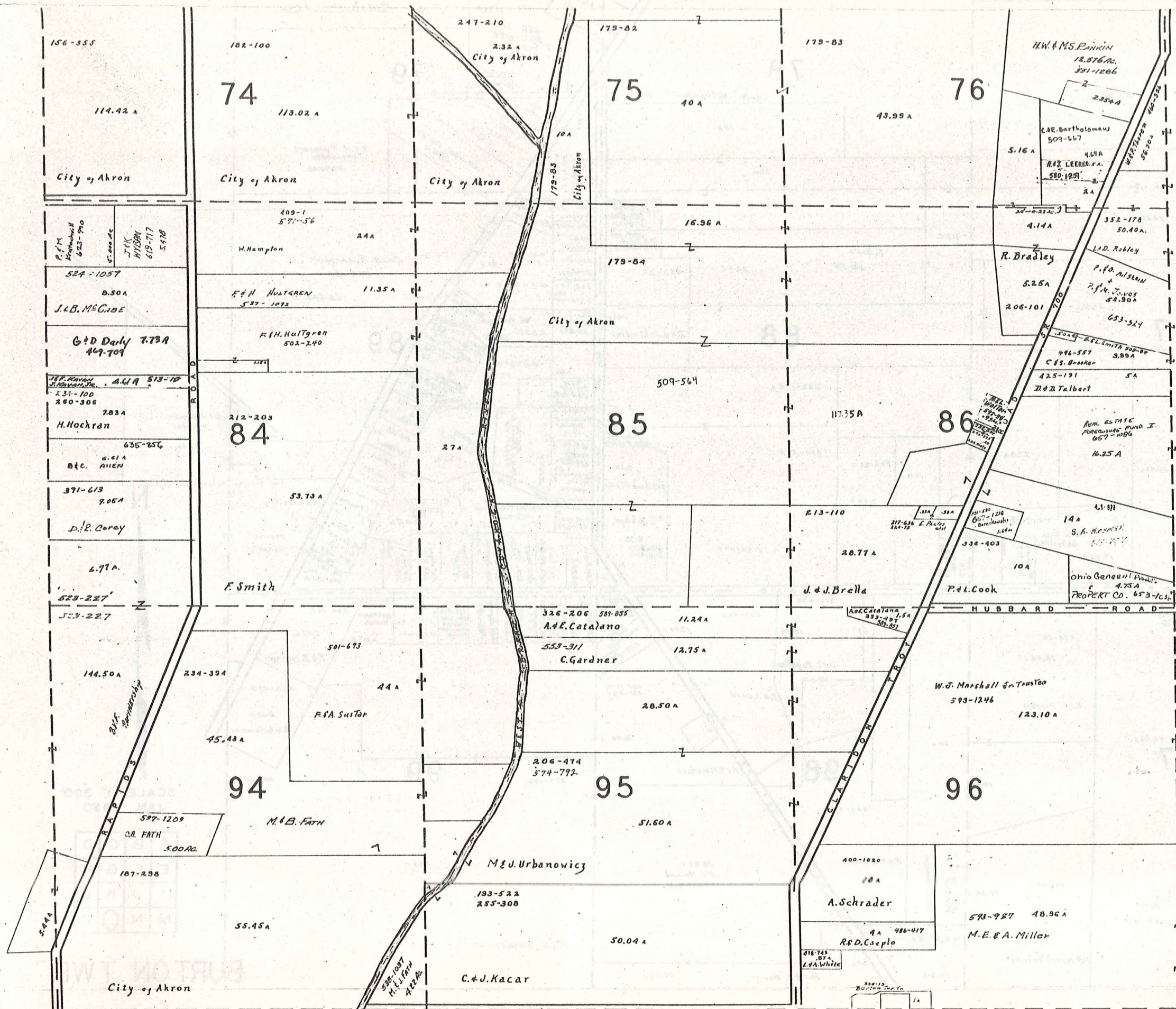
M I D D L E F I E L D T O W N S H I P



SCALE 1" = 300'
JAN. 1980

A	B	C	D
E	F	G	H
I	J	K	L
M	N	O	P

BURTON TWP.

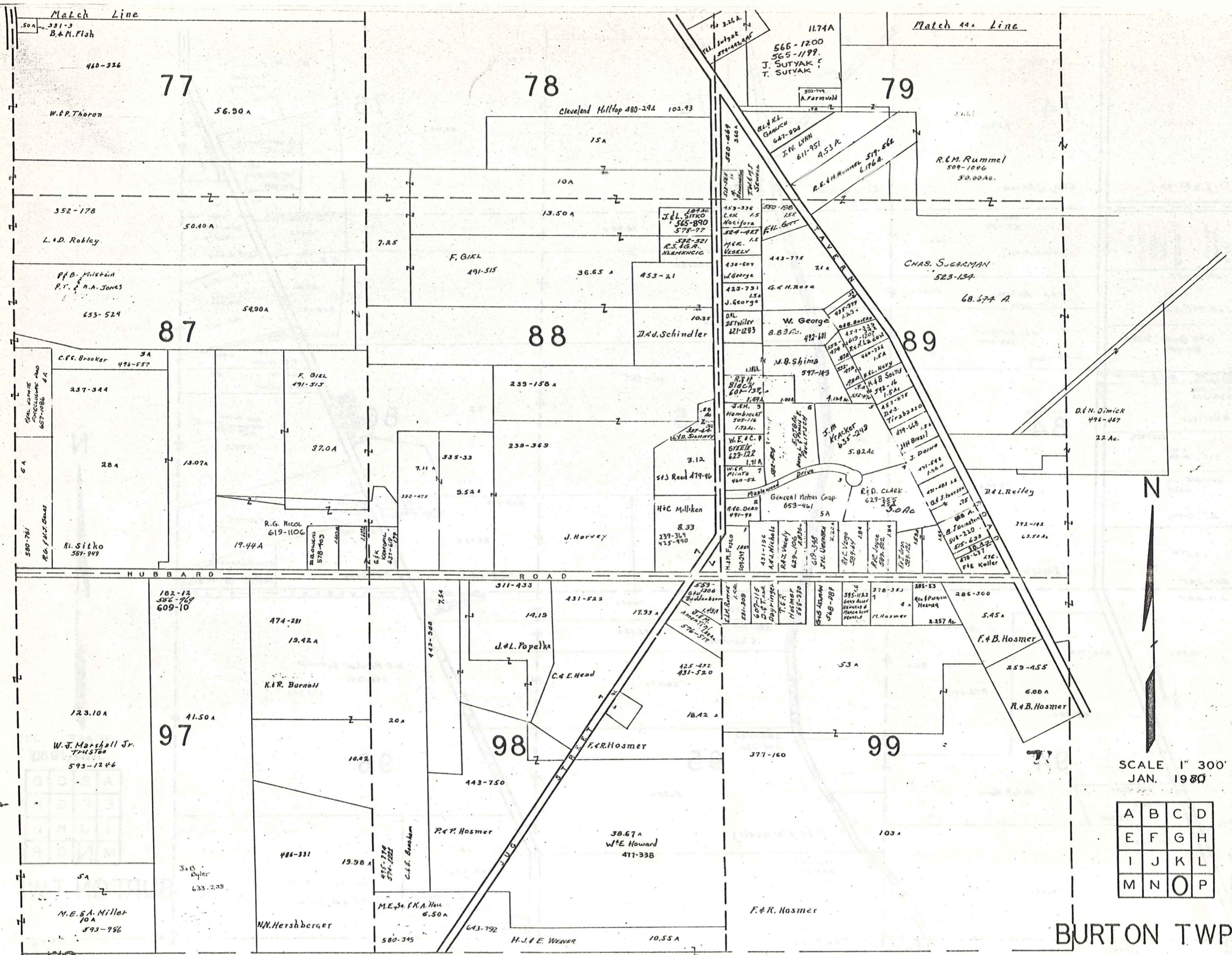


SCALE 1" = 300'
 JAN. 1980

A	B	C	D
E	F	G	H
I	J	K	L
M	N	O	P

BURTON TWP

T R O Y T O W N S H I P

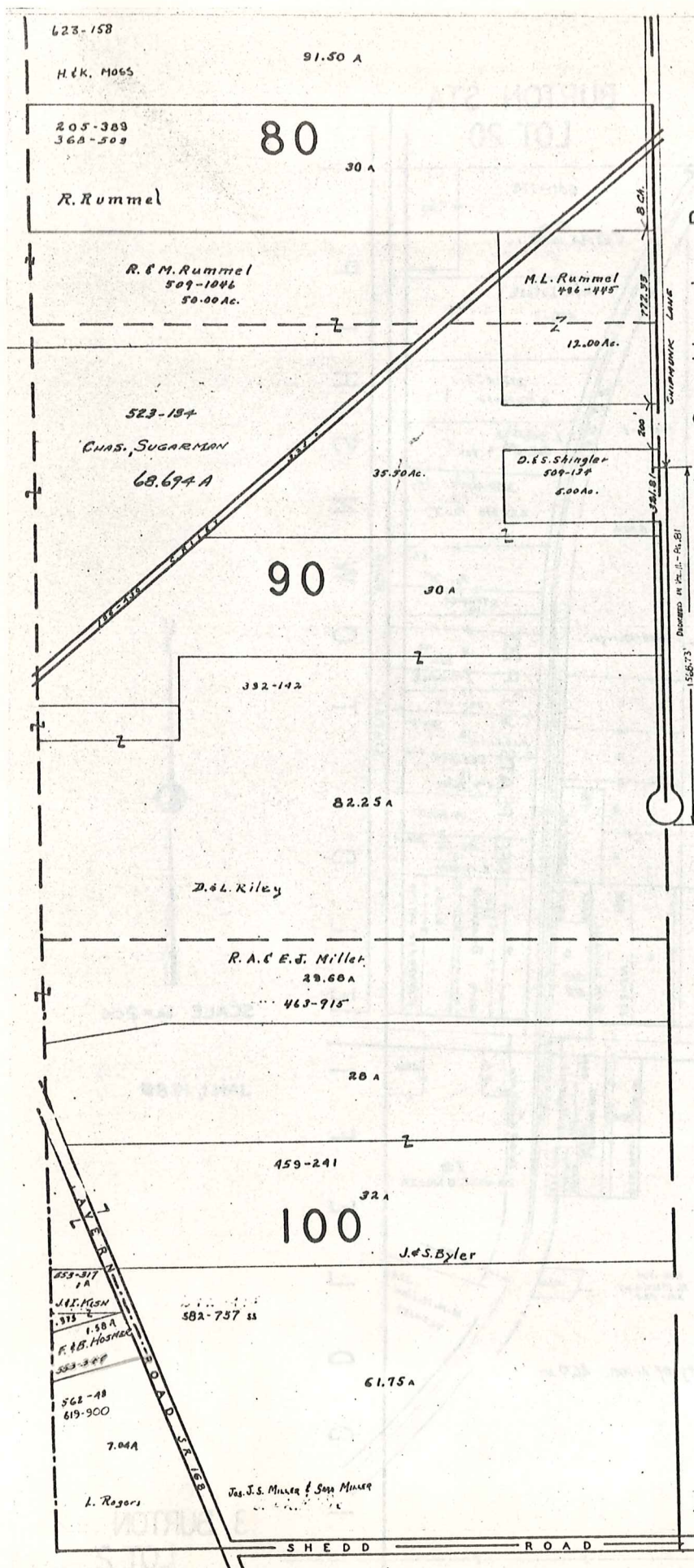


SCALE 1" = 300'
 JAN. 1980

A	B	C	D
E	F	G	H
I	J	K	L
M	N	O	P

BURTON TWP.

T R O Y T O W N S H I P



M I D D L E F I E L D T O W N S H I P

T R O Y

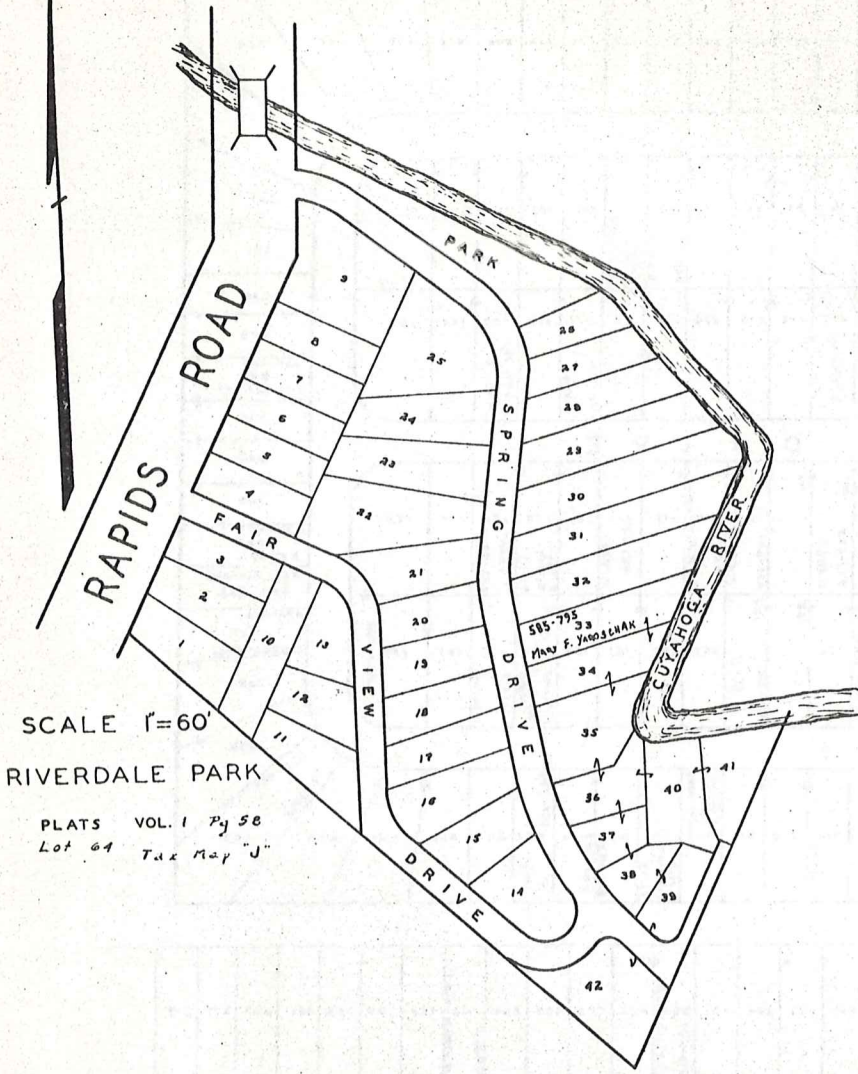
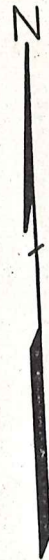
T O W N S H I P



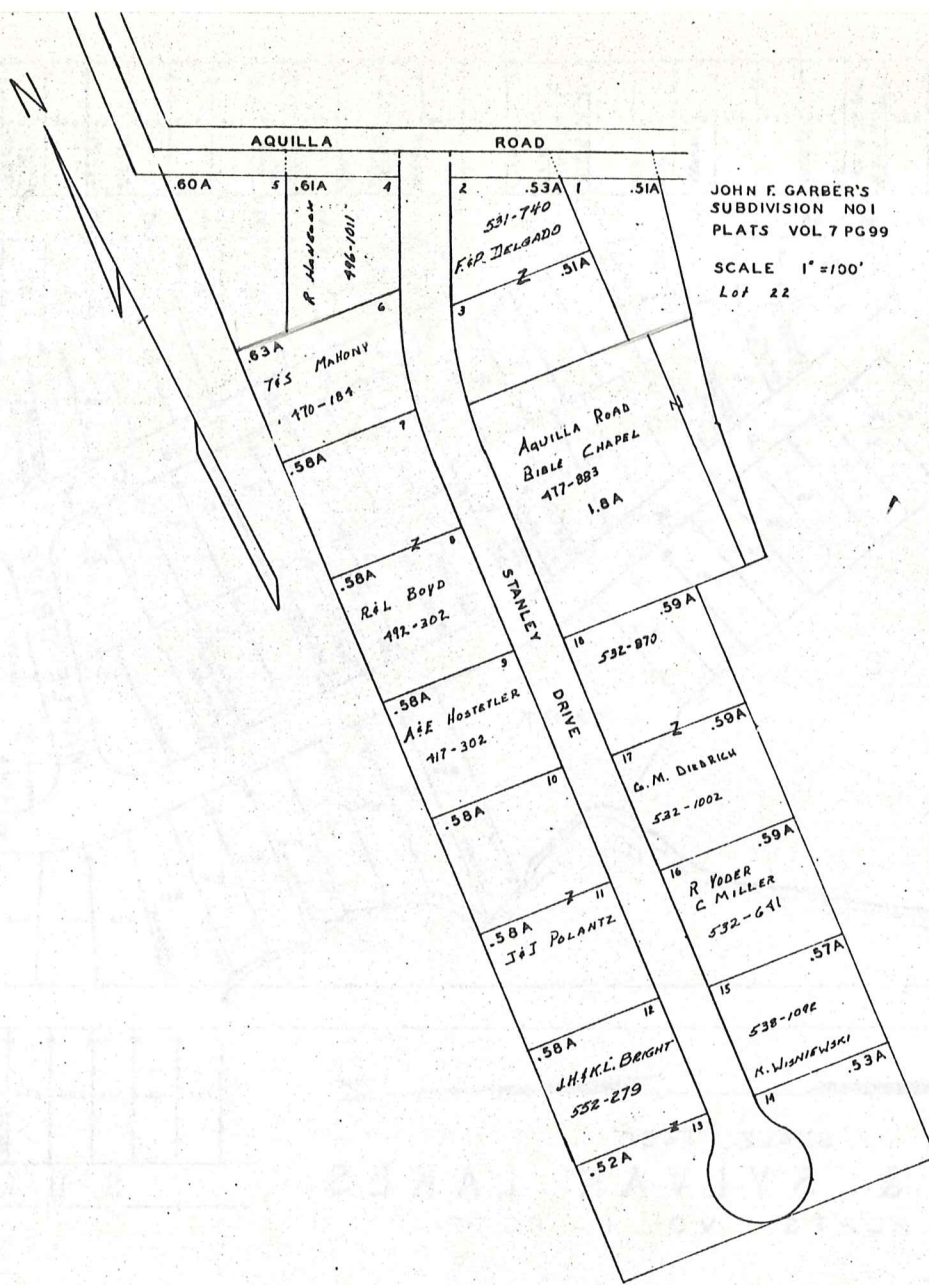
SCALE 1" = 300'
JAN. 1980

A	B	C	D
E	F	G	H
I	J	K	L
M	N	O	P

BURTON TWP 73



SCALE 1"=60'
 RIVERDALE PARK
 PLATS VOL. 1 Pgs 58
 Lot 61 Tax Map "J"

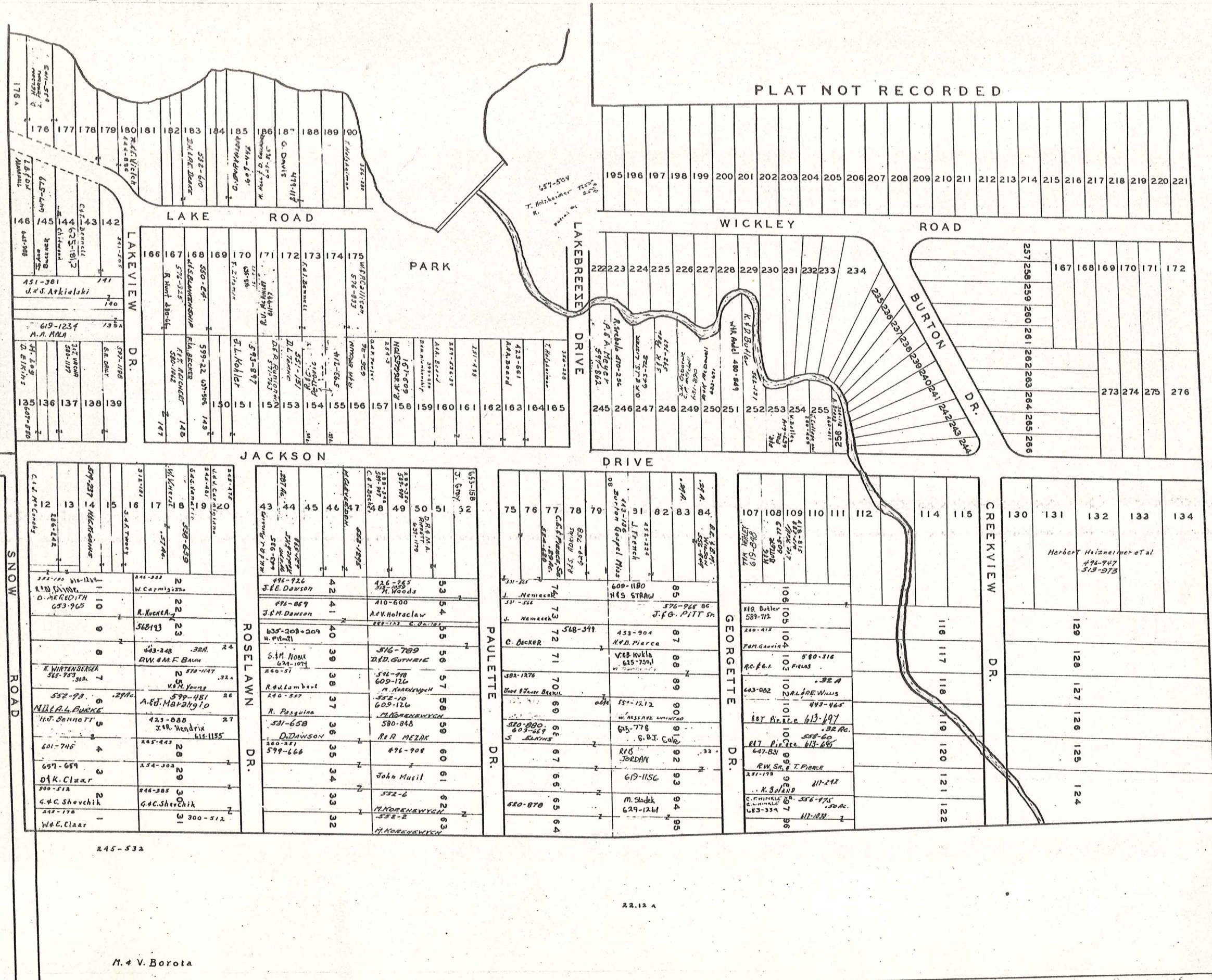


JOHN F. GARBER'S
 SUBDIVISION NO 1
 PLATS VOL 7 PG 99
 SCALE 1"=100'
 Lot 22

BURTON TWP.

JAN. 1988

3 T



245-532

22.12 A

M. & V. Borota

John Musius Burton

SCALE 1" = 100'

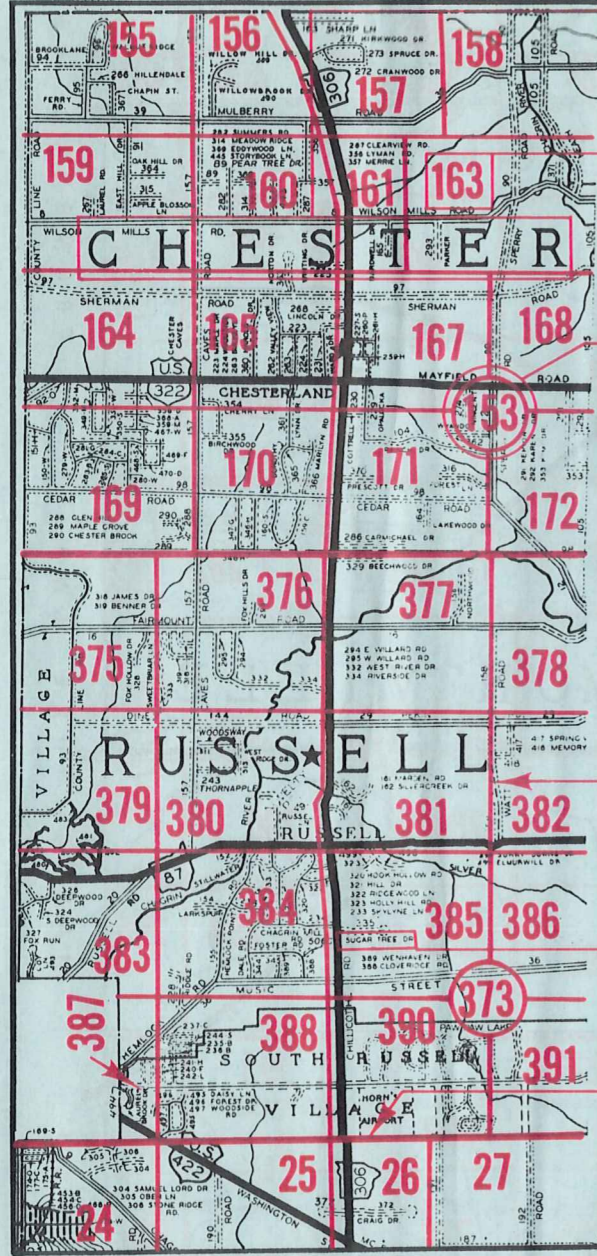
BURTON TWP. LOT 91

JAN. 1, 1980

3-U

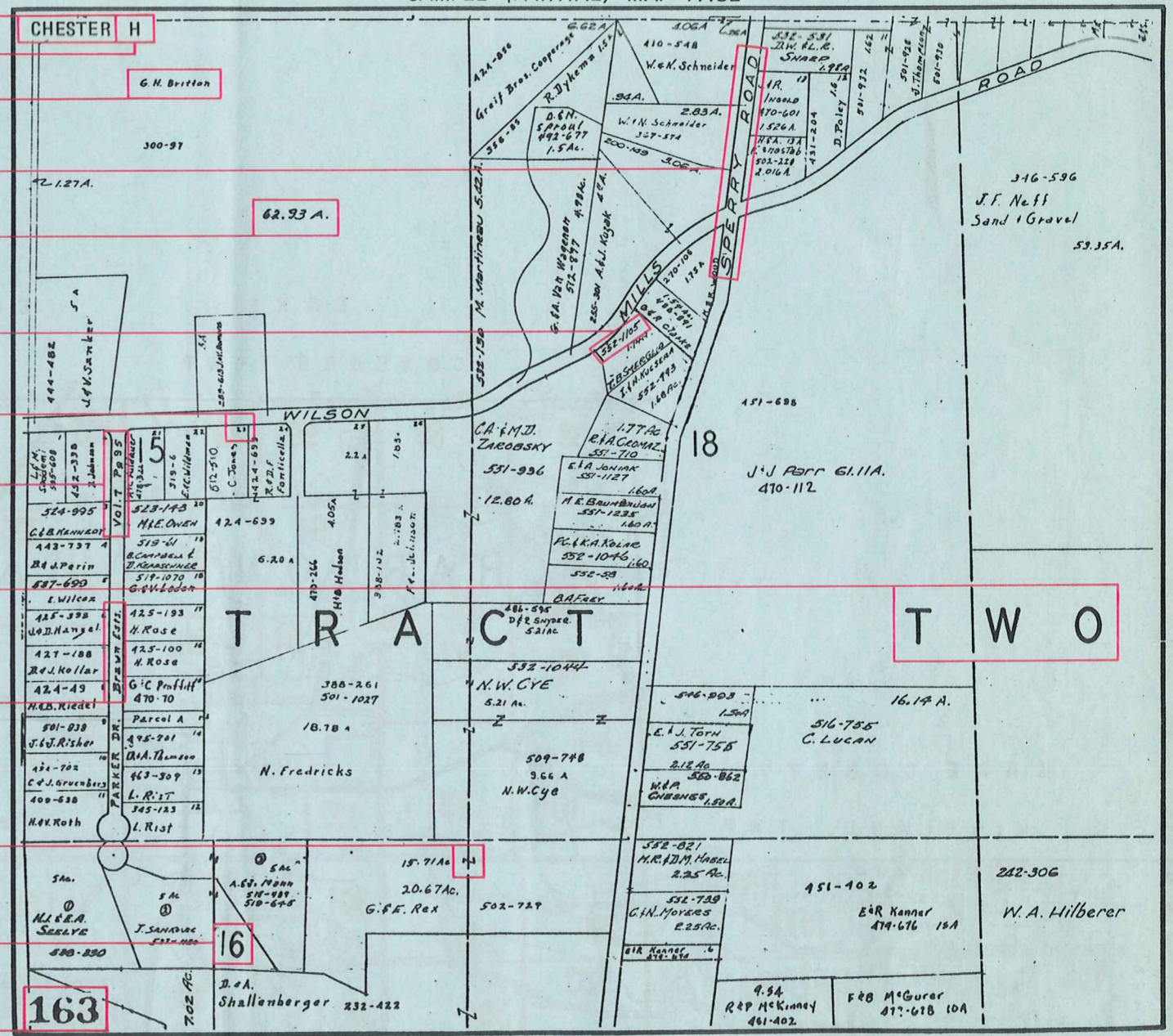
Explanation and Use Sheet for Geauga County, Ohio

SAMPLE (PARTIAL) COUNTY INDEX MAP



- Township Name
- Map Page Number (Or Letter)
- Owners Name
- Street Name
- Acreage
- Municipality Index Beginning Atlas Page Number
- Deed Book & Page
- Subdivision Lot Number
- Plat Book & Page
- Tract Number
- Atlas Page Boundary
- Subdivision Name
- Street Name
- Denotes Continuous Ownership
- Municipality Index Atlas Page Boundary
- Tract Lot Number
- Atlas Page Number

SAMPLE (PARTIAL) MAP PAGE



USE OF THE MAP VOLUME

1. LOCATE THE GENERAL AREA OF INTEREST ON THE COUNTY INDEX MAP, ATLAS PAGE 'B'.
2. **A. IF PROPERTY IS IN A TOWNSHIP**, NOTE THE ATLAS PAGE NUMBER. TURN TO THE PAGE INDICATED AND LOCATE SPECIFIC PARCEL OF INTEREST.
NOTE: ON SOME MAPS YOU MAY BE REFERRED TO A DETAIL SHEET SHOWING AN ENLARGEMENT OF THE AREA. THESE MAPS ARE FOUND AT THE END OF THE REGULAR MAP PAGES IN EACH TOWNSHIP EITHER IN ALPHABETICAL OR NUMERICAL SEQUENCE.
3. **B. IF PROPERTY IS IN A MUNICIPALITY**, REFER TO THE TABLE OF CONTENTS, ATLAS PAGE 'C', AND NOTE THE BEGINNING ATLAS PAGE NUMBER FOR THE MUNICIPALITY OF INTEREST.
 - (1) TURN TO THE PAGE INDICATED. ON THIS PAGE WILL APPEAR AN INDEX MAP FOR THAT MUNICIPALITY.
 - (2) LOCATE SPECIFIC AREA OF INTEREST AND NOTE THE MAP PAGE NUMBER.
NOTE: DO NOT CONFUSE THE MAP PAGE NUMBER WITH THE ATLAS PAGE NUMBER IN THESE MUNICIPALITIES.
 - (3) FOLLOW EITHER ALPHABETICAL OR NUMERICAL SEQUENCE TO THE MAP PAGE INDICATED AND LOCATE SPECIFIC PARCEL OF INTEREST.